



Janet Clarke Hall

THE UNIVERSITY OF MELBOURNE

jch.unimelb.edu.au   

2024 Scholarships & Financial Assistance

'My first year of College was a big year for me; I set many goals and pursued them with the backing of my new friends and tutors. After one year at JCH, I felt there was so much left to experience - I had only scratched the surface of College life. The major scholarship provided me, and continues to provide me, the capacity to become who I want to be, in a place I love to live.'

Charlie, 2nd Year Arts Unimelb, Terang

With the largest scholarship fund, per capita, of any Residential College in Australia, JCH proudly supports two thirds of our students with financial assistance. Please note that multiple scholarships may be held by the successful applicant, together with University and other external scholarships. **Minor Scholarships (up to \$5,000)** are offered on the basis of demonstrated academic achievement and / or leadership and service. New students will be automatically eligible. **Major Scholarships (\$5,000-\$20,000)** are offered on the basis of demonstrated financial need through the JCH bursary application form on our website. We consider applicants from Unimelb, RMIT and Monash Pharmacy.

Each year JCH offers the following major scholarships:

Indigenous (\$15,000)

Awarded annually towards residential fees, to new and returning Indigenous students. (If eligible, the 'Residential Cost Option' through ABSTUDY can also cover the cost of JCH fees).

Regional/Rural (\$5,000-\$20,000)

Awarded annually towards residential fees, to students from country Victoria on the basis of demonstrated financial need, academic merit and potential, and community service.

First Generation (\$10,000)

Awarded annually towards residential fees, to students who are part of the first generation in their family to attend University.

Music (up to \$20,000)

Awarded annually towards residential fees, to students studying in a Music degree.

Women (\$5,000-\$20,000)

Awarded annually towards residential fees, towards Undergraduate female students on the basis of demonstrated financial need, academic merit and potential, and community service.

Leadership (up to \$10,000)

Awarded annually towards residential fees, to new and returning students with particular regard to community service and leadership.

'The scholarship support I've received from JCH has unlocked a world of opportunity in allowing me to access such a vibrant and supportive community. By financially supporting my place at College, scholarships have given me the chance to wholeheartedly engage in all that JCH- and university life- has to offer, and for that I am truly grateful.'

Emily, Graduate Monash Pharmacy, Bendigo



'My scholarship has given me so many opportunities to make the most of university life! Being able to connect with other students and researchers has been especially eye-opening and inspiring for me. I've found that JCH is an opportunity to explore who I am, and has also given me every opportunity to become the person I want to be.'

Ollie, 1st Year Science Unimelb, WA

CASE STUDY - Kai from Warrnambool, 1st Year Design

Kai is a JCH resident with a major scholarship. As Kai lives in regional Victoria and as his parents' income means he qualifies for Youth Allowance, he is also eligible for a number of government benefits to support him moving away from home to study (2023 figures shown).

\$33,516 - JCH 2023 Fees

--
\$14,633 (\$563 / fortnight) - Youth Allowance
\$3,144 (\$157.20 / fortnight, 40 weeks) - Rent Assistance
\$5,080 - Relocation allowance first year
\$22,857 - TOTAL Government support

\$10,000 - JCH scholarship (regional / rural scholarship example)
\$7,500 - University of Melbourne Access Scholarship likely awarded
\$40,357 - TOTAL JCH, University & Government Support

This leaves Kai responsible for covering his incidental costs related to living in Melbourne and at JCH. It is quite common for our students to find a part-time job to cover their remaining fees / incidentals. We also aim to continue financial support for each year a resident stays in JCH.

Hear more from our JCH major scholarship recipients for 2023:



'As I boarded my plane to Melbourne, I could not help but feel apprehensive about coming to JCH. The thought of living with approximately a hundred other strangers for a whole year was a little unnerving. Despite this, JCH has been amazing in welcoming Freshers to the wonders of College life through icebreakers, trivia nights, and scavenger hunts. Our small, close-knit community is perfect for nurturing friendships with both like-minded and diverse people.'

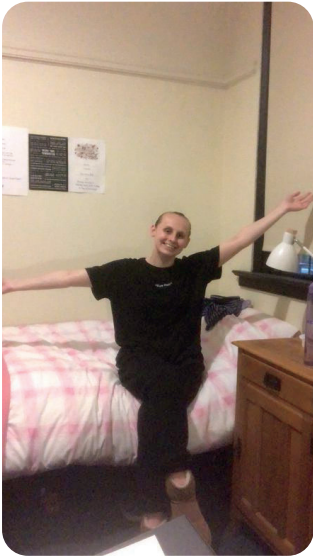
One of the best hangout places at JCH is the Dining Hall. While aesthetically pleasing, it is also the crossroad for bumping into College mates from different faculties. For me, it is always a pleasure to listen to someone talk passionately about their thesis, degrees, and aspirations... The scholarship has significantly lifted the financial burden for me and my family and unlocked opportunities for me to immerse myself in the College community, such as participating in the Intercollegiate Athletics competition. This scholarship will allow me to grow and discover who I am as an individual. From hanging out with friends on the rooftop to cozying up in the Library to study, I could not be happier about coming to JCH. The facilities, ambience, and most importantly, the people have provided me with a source of warmth and comfort. JCH has become my home away from home.'

Melinda Sun, 1st year Biomedicine, Brisbane QLD



Life at JCH is fun with a strong support system, including other students and Resident Tutors. During difficulties, it may feel like reaching out will burden others, but JCH's culture makes it safe to have conversations about your feelings. There is a welcoming and inviting environment here. Everyone is kind to others, despite our different backgrounds and experiences. One of my favourite places in College is the Bage, an intimate space with so many novels to choose from and there is always someone in the JCR playing pool or having a chat with others. It is a great place to relax and socialise. Receiving a scholarship has made a huge difference in my life...My ambition is to go into scientific research and I hope that throughout my Bachelor degree I will uncover the areas of research that most interest me. As a rural student, sometimes pathways to tertiary education can seem difficult, but this scholarship will allow me to achieve my goals, knowing that the College believes in my potential.'

Emma Weiser, 1st year Biomedicine, Moama NSW



'JCH has provided me with the invaluable opportunity to connect with those that have similar interests to me – academic success and personal growth. Our similar goals in College mean it is incredibly easy to make friends with anyone, which is what I love most about our community. I had initially been quite nervous about moving away from my family and from regional Victoria into the densely packed Melbourne city, however Janet Clarke Hall's relatively small community means that the feeling of being in an interconnected small town has never truly gone away, greatly helping in easing my nerves and allowing me to put myself out there in the College community and contribute to the lives of my fellow JCHers. The amount of events and activities in JCH mean there's always something fun to do. I recently represented the College in the Intercollegiate Step-Up competition, where a group of students from each college dances to a chosen song in front of the intercollegiate community. I would like to thank alumni donors for my Major Scholarship... Their generosity is greatly appreciated, as it allows me to look forward to this next stage of my life and education with excitement rather than anxiety. Thank you!'

Dylan Connell, 1st year Science, Bellarine Peninsula VIC

'I have never felt such a strong sense of community...None of this would have been possible if it were not for the generosity and genuine care for students by the alumni and supporters who have understood the vital importance of scholarships for students in my circumstances. I am so grateful to be a part of such a nurturing community, and am looking forward to the rest of my time here... I am also no more than fifty metres from a grand piano whenever I'm in College so practicing my repertoire has never been easier!'

Stella Horvath, 1st year Music, Melbourne VIC

